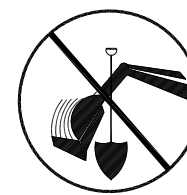
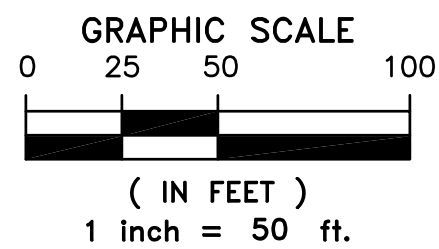
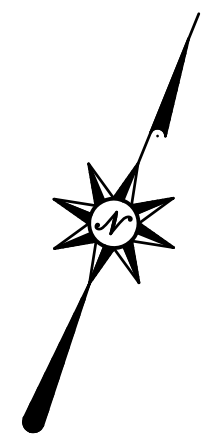
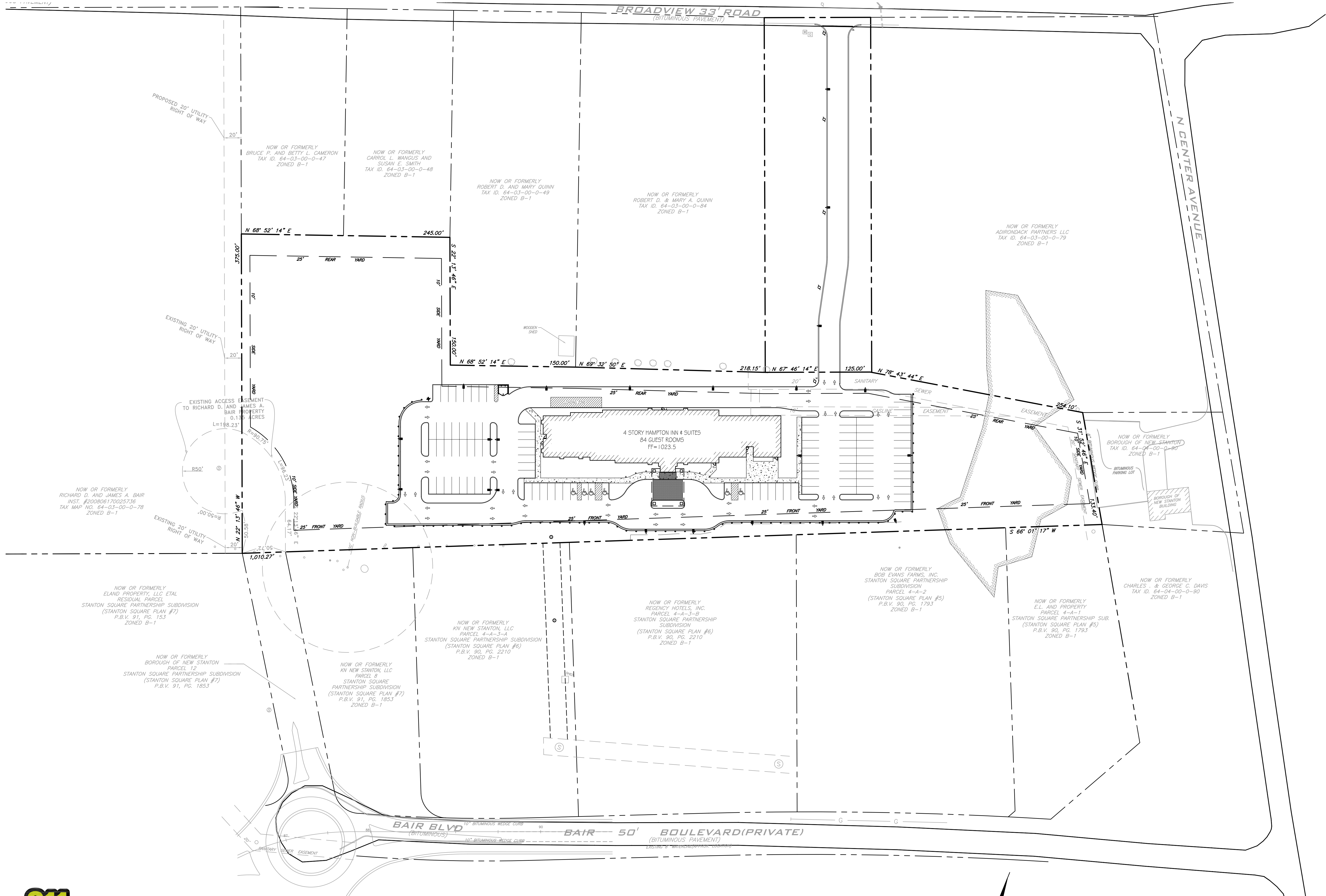


Rs:1511 - Plan - New Stanton Hotel030_Design (DWG)1511 - Plan-New Stanton - Base.dwg, Plotted: Jul 11, 2016 - 4:13pm

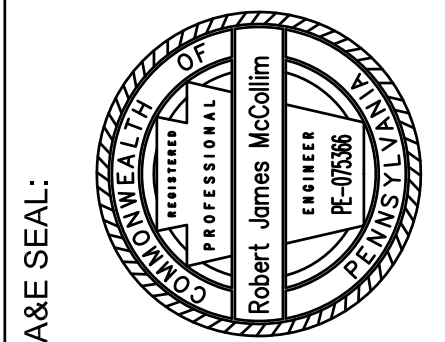


Know what's below.
Call before you dig.

IF THIS DRAWING IS LESS THAN 24" X 36" IT IS A REDUCED SIZE DRAWING



CALL BEFORE YOU DIG!
PENNSYLVANIA LAW REQUIRES
3 WORKING DAYS NOTICE FOR
CONSTRUCTION PHASE AND 10 WORKING
DAYS NOTICE IN DESIGN STAGE.
STOP CALL
PENNSYLVANIA ONE CALL SYSTEM, INC.
1-800-242-1776



ACKNOWLEDGEMENT OR "SIGN-OFF" BY
PARTIES TO THE CONSTRUCTION
DOCUMENTS IS REQUIRED FOR THE
ALTERATION OF LEASE TERMS.
THE INFORMATION CONTAINED IN THIS
SET OF DOCUMENTS IS PROPRIETARY
BY NATURE. ANY USE OR DISCLOSURE
BY OTHER THAN THAT WHICH RELATES TO
THE PROJECT DESCRIBED HEREIN,
WITHOUT THE WRITTEN CONSENT OF
THIS PERSON, UNLESS THEY ARE WORKING
UNDER THE DIRECTION OF A LICENSED
PROFESSIONAL ENGINEER, TO ALTER
THIS DOCUMENT.

HAMPTON INN & SUITES

BAIR BOULEVARD
NEW STANTON, PA 15672
WESTMORELAND COUNTY, PENNSYLVANIA

REVISIONS:		REVISOR PER MUNICIPAL COMMENTS	
MARK	DATE	REVISOR	DESCRIPTION
1	7/11/2016		

PROJ NO: 1511
SCALE: AS SHOWN
DATE: 5/18/2016
DESIGNED BY: RJM
DRAWN BY: MJN
CHECKED BY: CKM

SHEET TITLE:
LOCATION PLAN
SHEET NO.
C2.1